

1658691-1 ✓ ACTIVE



AMPLIMITE

TE Internal #: 1658691-1

Crimp D-Sub Connectors, Plug, Cable-to-Cable, 15 Position, Size 22, Size 1, Mating Retention, Shielded, .09 in [2.28 mm] Centerline, Wire & Cable

[View on TE.com >](#)

Connectors > D-Shaped Connectors > D-Sub Connectors > Crimp D-Sub Connectors > D-Sub Crimp: Plug, Signal, 50 Posn, Pin Size 22, Shell Size 1



Connector & Housing Type: **Plug**

Connector System: **Cable-to-Cable**

Number of Positions: **15**

D-Sub Contact Size: **22**

D-Sub Shell Size: **1**

[All D-Sub Crimp: Plug, Signal, 50 Posn, Pin Size 22, Shell Size 1 \(4\)](#)

Features

Product Type Features

Grounding Indents	With
Product Type	Connector
Grade	Standard
Shell Type	Full Metal Shell
Connector & Housing Type	Plug
Connector System	Cable-to-Cable
D-Sub Shell Size	1
Sealable	No
Connector & Contact Terminates To	Wire & Cable

Configuration Features

Number of Positions	15
---------------------	----

Body Features



Shell Plating Material	Tin
Nut Plating Material	Zinc
Nut Material	Steel
Shell Material	Steel
Shield Material	Steel
Insert Material	Nylon

Contact Features

D-Sub Contact Size	22
--------------------	----

Mechanical Attachment

Mating Retention	With
Mating Retention Type	Clinch Nut, 4-40 UNC

Housing Features

Housing Color	Black
Housing Material	Nylon GF
Centerline (Pitch)	2.28 mm [.09 in]

Usage Conditions

Operating Temperature Range	-55 – 105 °C [-67 – 221 °F]
-----------------------------	-----------------------------

Operation/Application

Shielded	Yes
Circuit Application	Signal

Industry Standards

Insert Flammability Rating	UL 94V-0
UL Flammability Rating	UL 94V-0

Packaging Features

Packaging Quantity	400
Packaging Method	Carton

Product Compliance

For compliance documentation, visit the product page on [TE.com](https://www.te.com)>

EU RoHS Directive 2011/65/EU	Compliant
EU ELV Directive 2000/53/EC	Compliant
China RoHS 2 Directive MIIT Order No 32, 2016	No Restricted Materials Above Threshold



EU REACH Regulation (EC) No. 1907/2006

Current ECHA Candidate List: JUNE 2022 (224)

Candidate List Declared Against: JUNE 2022 (224)

Does not contain REACH SVHC

Halogen Content

BFR/CFR/PVC Free, but Br/Cl >900 ppm in other sources.

Solder Process Capability

Not applicable for solder process capability

Product Compliance Disclaimer

This information is provided based on reasonable inquiry of our suppliers and represents our current actual knowledge based on the information they provided. This information is subject to change. The part numbers that TE has identified as EU RoHS compliant have a maximum concentration of 0.1% by weight in homogenous materials for lead, hexavalent chromium, mercury, PBB, PBDE, DBP, BBP, DEHP, DIBP, and 0.01% for cadmium, or qualify for an exemption to these limits as defined in the Annexes of Directive 2011/65/EU (RoHS2). Finished electrical and electronic equipment products will be CE marked as required by Directive 2011/65/EU. Components may not be CE marked. Additionally, the part numbers that TE has identified as EU ELV compliant have a maximum concentration of 0.1% by weight in homogenous materials for lead, hexavalent chromium, and mercury, and 0.01% for cadmium, or qualify for an exemption to these limits as defined in the Annexes of Directive 2000/53/EC (ELV). Regarding the REACH Regulation, the information TE provides on SVHC in articles for this part number is based on the latest European Chemicals Agency (ECHA) 'Guidance on requirements for substances in articles' posted at this URL: <https://echa.europa.eu/guidance-documents/guidance-on-reach>

Compatible Parts



TE Part # CAT-038-DCPPS221
D-Sub Crimp: Plug, Signal, 50 Posn, Pin Size 22, Shell Size 1



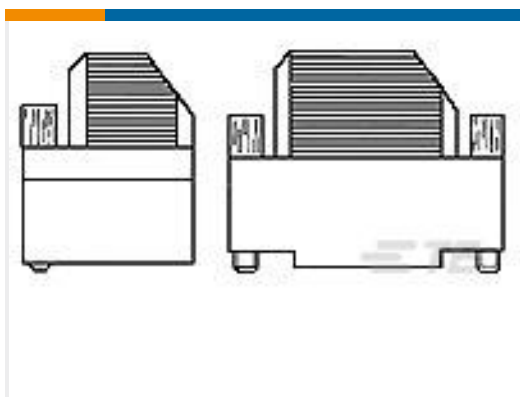
TE Part # CAT-038-DCRSS221
D-Sub Crimp Recept Signal 15 Posn, Socket Size 22, Shell Size 1



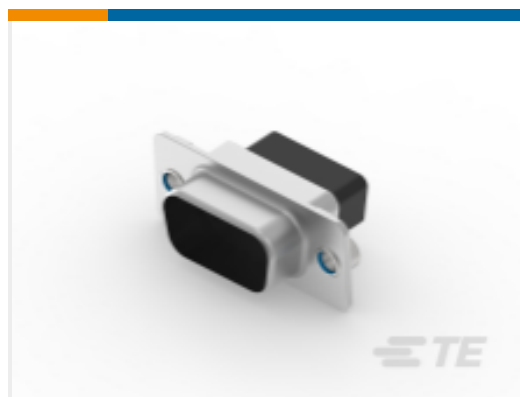
TE Part # 216164-1
15P.HDP22 REC.ASSY.



TE Part # 2198617-9
Ni Plated Plastic Backshell, 9 Way, Str



TE Part # 1393738-2
V42254A6000G115=SUB D GEHAEUSE



TE Part # 1658993-1
OVERMOLD,PLUG ASSY,HDP-22,15 POSN,W/CLIN

Documents

Product Drawings

HDP-22,PLUG,SIZE 1,15 POSN,CLI

English

CAD Files



3D PDF

English

Customer View Model

[ENG_CVM_1658691-1_O.2d_dxf.zip](#)

English

Customer View Model

[ENG_CVM_1658691-1_O.3d_igs.zip](#)

English

Customer View Model

[ENG_CVM_1658691-1_O.3d_stp.zip](#)

English

By downloading the CAD file I accept and agree to the [Terms and Conditions](#) of use.

Datasheets & Catalog Pages

[AMPLIMITE Subminiature D Connectors - Cable Connectors](#)

English

[AMPLIMITE Cable Connectors and Shielding Hardware Kits QRG](#)

English

Product Specifications

[Application Specification](#)

English

Product Environmental Compliance

[MD_1658691-1_09082012027](#)

English

[MD_1658691-1_09082012027](#)

English

Instruction Sheets

[Instruction Sheet \(U.S.\)](#)

English

Agency Approvals

[UL Report](#)

English